

JKM270PP-60

255-270 Watt

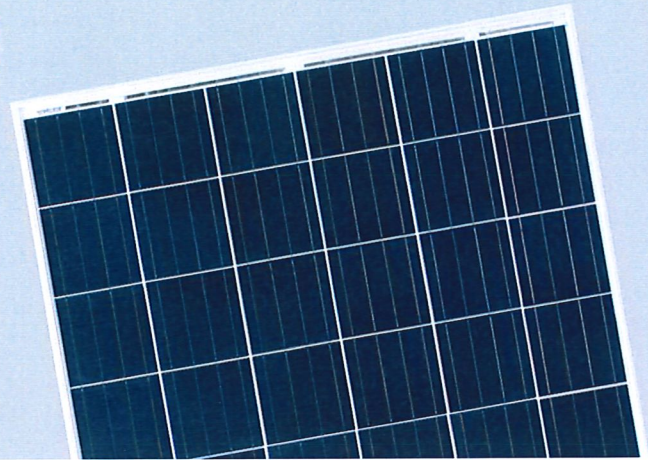
POLY CRYSTALLINE MODULE

Positive power tolerance of 0/+3%

ISO9001:2008, ISO14001:2004, OHSAS18001 certified factory.
IEC61215, IEC61730 certified products.



(4BB)



KEY FEATURES



4 Busbar Solar Cell:

4 busbar solar cell adopts new technology to improve the efficiency of modules, offers a better aesthetic appearance, making it perfect for rooftop installation.



High Power Output:

Polycrystalline 60-cell module achieves a power output up to 270Wp.



Anti-PID Guarantee:

Limited power degradation of Eagle module caused by PID effect is guaranteed under 60 C/85% RH condition for mass production.



Low-light Performance:

Advanced glass and surface texturing allow for excellent performance in low-light environments.



Severe Weather Resilience:

Certified to withstand: wind load (2400 Pascal) and snow load (5400 Pascal).



Durability against extreme environmental conditions:

High salt mist and ammonia resistance certified by TUV NORD.



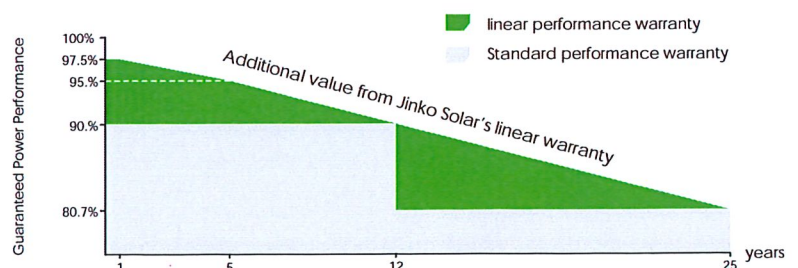
Temperature Coefficient:

Improved temperature coefficient decreases power loss during high temperatures.

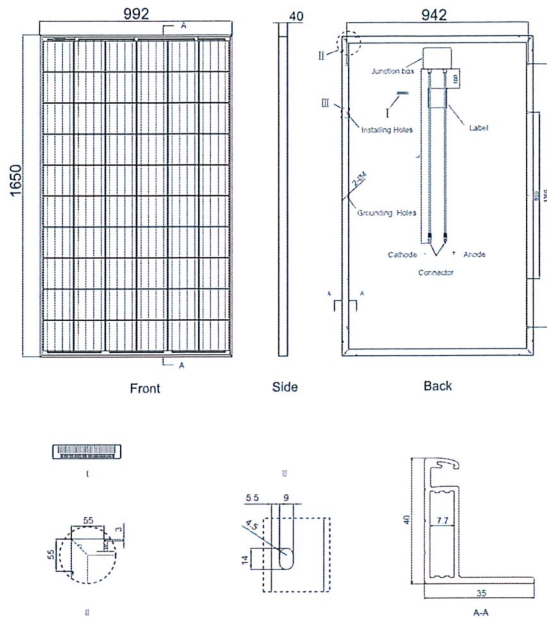


LINEAR PERFORMANCE WARRANTY

10 Year Product Warranty • 25 Year Linear Power Warranty



Engineering Drawings



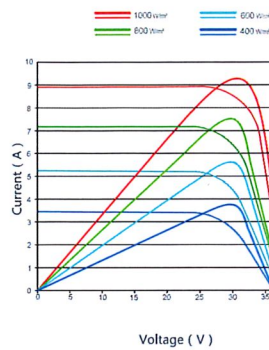
Packaging Configuration

(Two boxes=One pallet)

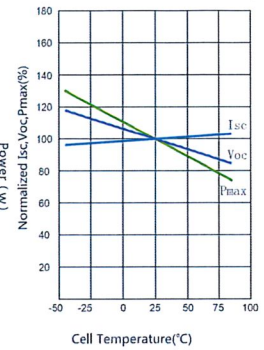
25pcs/ box, 50pcs/pallet, 700 pcs/40'HQ Container

Electrical Performance & Temperature Dependence

Current-Voltage & Power-Voltage Curves (260W)



Temperature Dependence of Isc, Voc, Pmax



Mechanical Characteristics

Cell Type	Poly-crystalline 156×156mm (6 inch)
No. of cells	60 (6×10)
Dimensions	1650×992×40mm (65.00×39.05×1.57 inch)
Weight	19.0 kg (41.9 lbs)
Front Glass	3.2mm, High Transmission, Low Iron, Tempered Glass
Frame	Anodized Aluminium Alloy
Junction Box	IP67 Rated
Output Cables	TÜV 1×4.0mm ² , Length: 900mm or Customized Length

SPECIFICATIONS

Module Type	JKM255PP		JKM260PP		JKM265PP		JKM270PP	
	STC	NOCT	STC	NOCT	STC	NOCT	STC	NOCT
Maximum Power (Pmax)	255Wp	190Wp	260Wp	194Wp	265Wp	198Wp	270Wp	202Wp
Maximum Power Voltage (Vmp)	30.8V	28.1V	31.1V	28.3V	31.4V	28.7V	31.7V	29.0V
Maximum Power Current (Imp)	8.28A	6.75A	8.37A	6.84A	8.44A	6.91A	8.52A	6.97A
Open-circuit Voltage (Voc)	38.0V	35.0V	38.1V	35.1V	38.6V	35.3V	38.8V	35.6V
Short-circuit Current (Isc)	8.92A	7.22A	8.98A	7.26A	9.03A	7.31A	9.09A	7.35A
Module Efficiency STC (%)	15.58%		15.89%		16.19%		16.50%	
Operating Temperature(°C)	-40°C~+85°C							
Maximum system voltage	1000VDC (IEC)							
Maximum series fuse rating	15A							
Power tolerance	0~+3%							
Temperature coefficients of Pmax	-0.40%/°C							
Temperature coefficients of Voc	-0.30%/°C							
Temperature coefficients of Isc	0.06%/°C							
Nominal operating cell temperature (NOCT)	45±2°C							

STC: Irradiance 1000W/m² Cell Temperature 25°C

AM=1.5

NOCT: Irradiance 800W/m² Ambient Temperature 20°C

AM=1.5

Wind Speed 1m/s

* Power measurement tolerance: ± 3%

Solis Three Phase Inverter



Leading Features

- ▶ Three phase output
- ▶ Over 98.3% Max. efficiency
- ▶ 200V – 800V input voltage range
- ▶ Dual MPPT design with precise MPPT algorithm
- ▶ Compact and light design for one-person easy installation
- ▶ IP65, visually pleasing for domestic environment
- ▶ RS 485, WiFi/GPRS (optional) interface
- ▶ Numerous protection functions
- ▶ WiFi and monitoring app available
- ▶ 5 year standard, 8 year premium warranty, or extended options



Ginlong Technologies Co.,Ltd

Address: No. 57 Jintong Road, Binhai Industrial Park, Xiangshan,
Ningbo, Zhejiang, 315712, China

Tel: +44 (0)113 328 0870 +86 (0)574 6578 1806 Fax: +86 (0)574 6578 1606

Email: info@ginlong.com Web: www.ginlong.com

Data Sheet

Model	Solis-6K	Solis-10K	Solis-15K
Energy source		PV	
Input Side			
Max. input power(kW)	6.9	11.5	16.5
Max. input voltage(V)		1000	
Start-up input voltage(V)		330	
MPPT voltage range(V)		200-800	
Max. input current(A)	15+15		18+18
MPPT number/Max. input strings number	2/2		2/4
Output Side			
Rated output power(kW)	6	10	15
Max. transient power(kW)	6.6	11	15
Rated AC grid voltage(V)		380/400	
AC grid voltage range(V)		313-470(adjustable)	
Operating phase		three	
Max. AC output current(A)	10.0	16.7	25.0
Output power factor		>0.99	
Grid current THD		Total THD <3%	
DC injection current(mA)	<20		<50
Rated grid frequency(Hz)		50/60	
Efficiency			
Max. efficiency	98.2%		98.3%
Euro efficiency	97.3%		97.5%
MPPT efficiency		99.9%	
Protection			
DC reverse-polarity protection		Yes	
Short circuit protection		Yes	
Output over current protection		Yes	
Output over voltage protection		Yes	
Insulation resistance monitoring		Yes	
Residual current detection		Yes	
Surge protection		Yes	
Grid monitoring		Yes	
Islanding protection		Yes	
Temperature protection		Yes	
Integrated DC switch		Optional	
General data			
Size(mm)		430W*613H*269D	
Weight(kg)	29.0		30.0
Topology		Transformerless	
Self consumption		<1W (Night)	
Operating ambient temperature range		-25°C~60°C	
Ingress protection		IP65	
Operating range utility frequency (Hz)		47-52 or 57-62(adjustable)	
Noise emission(typical)		<30 dBA	
Cooling concept		Natural convection	
Max. operation altitude		4000m	
Designed lifetime		>20 years	
Utility monitoring		En50438, G59/3, AS4777, VDE0126-1-1, IEC61727	
Operating surroundings humidity		0~100%	
EMC		EN61000-6-1:2007; EN61000-6-3:2007; IEC62109-1/-2; AS3100	
Features			
DC Connection		Original MC4 Connector	
AC Connection		IP67 rated plug	
Display		LCD, 2 x 20 Z.	
Interface		RS 485, WiFi/GPRS (optional)	
Warranty		10 Years	

ALU, FESTE SKINNE**66 02 551**

Festeskinne i aluminium for
montering av solcellepanel.

BESKRIVELSE:

Festeskinne i Aluminium for montering av solcellepanel. Kommer i lengdene 2100mm, 4200mm .

STS Festesystem består av de fleste løsninger man ønsker for solcellemontering.

Innebefatter løsninger for:

Flatt tak, Taksten, Shingel, bølgeblekk, og andre.

MEKANISK:

Materiale: AL6005-T5 Anodisering 12um

Str: HxBxD 55mm X 2100mm X 28mm

Vekt: 0,85 kg/m



STANDARDER:

AS/NZS 11750, DIN 1055

SKINNE SKJØT**66 02 551**

Skjøt til Festeskinne i aluminium for montering av solcellepanel.

BESKRIVELSE:

Skjøt til Festeskinne i Aluminium for montering av solcellepanel. Kommer i lengdene 2100mm, 4200mm .

STS Festesystem består av de fleste løsninger man ønsker for solcellemontering.

Innebefatter løsninger for:

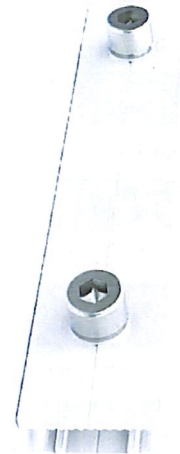
Flatt tak, Taksten, Shingel, bølgeblikk, og andre.

MEKANISK:

Materiale: AL6005-T5 , A2-70

Str: 150x30x15

Vekt: 0,15 kg



STANDARDER:

AS/NZS 11750, DIN 1055

TAKSTEN, MONT KIT 12

Montasje kit justerbart for taksten, horison-
tale skinner

66 02 554

BESKRIVELSE:

Feste kit for tak med taksten. Kit 12 er for horisontalt monterte skinner, justerbart.

STS Festesystem består av de fleste løsninger man ønsker for solcellemontering.

Innebefatter løsninger for:

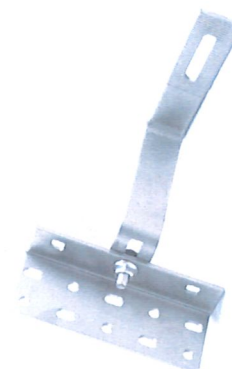
Flatt tak, Taksten, Shingel, bølgeblekk, og andre.

MEKANISK:

Materiale: SUS304

Str: 156-176x35-50x5

Vekt: 0,65 kg



STANDARDER:

AS/NZS 11750, DIN 1055

KLAMMER FOR RAMMET MODUL 40MM

Mellomfeste til solcellemoduler

66 02 564

BESKRIVELSE:

Monteres på Aluskinne for å klemme fast solcellemodulser med alu ramme.

STS Festesystem består av de fleste løsninger man ønsker for solcellemontering.

Innebefatter løsninger for:

Flatt tak, Taksten, Shingel, bølgeblikk, og andre.

MEKANISK:

Materiale: AL6005-T5 Anodisering 12um

Str: HxBxD : 40mm

Vekt: 0,062 kg



STANDARDER:
AS/NZS 11750, DIN 1055

ENDEKLAMMER FOR RAMMET MODUL 40MM

Endefeste til solcellemoduler

66 02 569

BESKRIVELSE:

Monteres på Aluskinne for å klemme fast solcellemoduler med alu ramme.

STS Festesystem består av de fleste løsninger man ønsker for solcellemontering.

Innebefatter løsninger for:

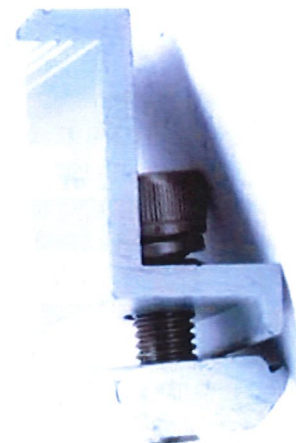
Flatt tak, Taksten, Shingel, bølgeblikk, og andre.

MEKANISK:

Materiale: AL6005-T5 Anodisering 12um

Str: HxBxD : 40mm

Vekt: 0,053 kg



STANDARDER:

AS/NZS 11750, DIN 1055